

WIGMORE



HALL



2016/17
SEASON PREVIEW
AND APPEAL

THANK YOU

The Wigmore Hall Trust would like to acknowledge and thank the following individuals and organisations for their generous support throughout the 2015/16 Season.

HONORARY PATRONS

Aubrey Adams
André and Rosalie Hoffmann
Sir Ralph Kohn FRS and Lady Kohn
Mr and Mrs Paul Morgan

SEASON PATRONS

Aubrey Adams*
American Friends of Wigmore Hall
Art Mentor Foundation Lucerne†
Karl Otto Bonnier*
Henry and Suzanne Davis
Dunard Fund‡
The Hargreaves and Ball Trust
Pauline and Ian Howat
The Monument Trust
Valerie O'Connor
Hamish Parker
David Rockwell and Zsombor Csoma†
Ian Rosenblatt
Victoria and Simon Robey*
Cita and Irwin Stelzer*
William and Alex de Winton*
and several anonymous donors

CHAMBER MUSIC CIRCLE

Tony and Marion Allen*
Karl Otto Bonnier*
Judy Davies and Kingsley Manning*
Margery Gray
The Hargreaves and Ball Trust
Pauline and Ian Howat
Lord and Lady Lloyd
The Marchus Trust‡
Jo and Barry Slavin
The Tertis Foundation
Marina Vaizey
Kathleen Verelst*
Tony Wingate
and several anonymous donors

VOICES AT WIGMORE: THE SCHUBERT SONG PROJECT

Tony and Marion Allen*
Anthony Austin
Geoffrey Barnett
Karl Otto Bonnier*
Nicola Coldstream
Pauline Del Mar
J L Drewitt
Benjamin Hargreaves
Edith Randall
Louise Scheuer
Gill and Keith Stella*
John and Ann Tusa
Gerry Wakelin*
Susan Ward

David and Frances Waters*
David Evan Williams

CORPORATE SUPPORTERS

Capital Group
(corporate matched giving)
Clifford Chance LLP
Complete Coffee Ltd
Duncan Lawrie Private Banking
Martin Randall Travel Ltd
Rosenblatt Solicitors
Rothschild

BACK OF HOUSE REFURBISHMENT SUMMER 2015

Arts Council England
The Foyle Foundation
The J Paul Getty Jnr Charitable Trust
Rose and Dudley Leigh
Sir Siegmund Warburg's
Voluntary Settlement
The Garfield Weston Foundation
The Wolfson Foundation
and several anonymous donors

DONORS AND SPONSORS

The 29th May 1961 Charitable Trust^L
Mr Eric Abraham*
Neville and Nicola Abraham
Elaine Adair
The Andor Charitable Trust^L
David and Jacqueline Ansell*
Bernard and Ann Apter
Arts Council England
David and Margaret Beaton
Alan Bell-Berry
Mr Nicholas J Bez
Mrs Arline Blass
David and Mary Bowerman*
Sir John and Lady Boyd
Alan Bradley*
Wolf-Reiner Braun and John Sinclair
Nicolas and Hilary
Browne-Wilkinson
Clive Butler
A bequest from the late Peter Cain
CAVATINA Chamber Music Trust^L
Charities Advisory Trust^L
City Bridge Trust^L
Colin Clark
Edwin C Cohen
John Crisp*
Peter Crisp and Jeremy Crouch*
Celia and Andrew Curran
Anthony Davis*
The Dorset Foundation – in memory
of Harry M Weinrebe

Kate Dugdale
In memory of Robert Easton
Douglas and Janette Eden
Mr Martin R Edwards
The Eldering/Goecke Family
Annette Ellis*
The Elton Family
Dr C A Endersby and Prof D Cowan
The Ernest Cook Trust
Caroline Erskine
Felicity Fairbairn^L
Mrs Susan Feakin
Peter and Sonia Field^L
Deborah Finkler and Allan Murray-Jones
Neil and Deborah Franks*
John and Amy Ford
S E Franklin Charitable Trust No. 3^L
Friends of Wigmore Hall
Jonathan Gaisman*
The Garrick Charitable Trust^L
John Gilhooly*
John and Lauren Goldsmith*
Nicholas and Judith Goodison*
Peter Goodwin
Charles Green
Alexis Gregory Foundation
and the Vendome Prize
Barbara and Michael Gwinnett
Mr and Mrs Rex Harbour*
Peter Hardy
The Headley Trust^L
Malcolm Herring*
Nicholas Hodgson
André and Rosalie Hoffmann‡
Peter and Carol Honey*
Gay Huey Evans*
Graham and Amanda Hutton*
Hyde Park Place Estate Charity^L
Simone Hyman*
The Idlewild Trust
Peter and Nikki Jeffcote
John Lyon's Charity^L
Marc Jourden*
In memory of Donald Kahn
Su and Neil Kaplan*
Jerome Karet*
David and Louise Kaye*
Sir Ralph Kohn FRS and Lady Kohn*
The Kohn Foundation
Christian Kwek and David Hodges*
Maryly La Follette*
Gabor Lacko
Alan Leibowitz and Barbara Weiss^L
The Leverhulme Trust^L
Tim Llewellyn
The Loveday Charitable Trust^L
Simon and Sophie Ludlam*

A bequest from the late John Lunn
David Lyons*
Sir Jack Lyons Charitable Trust
Simon Majaro MBE and Pamela Majaro MBE
Mayfield Valley Arts Trust
Michael and Lynne McGowan*
George Meyer^L
Alison and Antony Milford^L
Milton Damerel Trust^L
The Monument Trust
Amyas and Louise Morse*
Mr and Mrs M J Munz-Jones
A C and F A Myer
Valerie O'Connor^L
The Nicholas Boas Charitable Trust
P Parkinson
The Piano Fund
Dr Clive Potter*
Oliver and Helen Prenn
Nick and Claire Prettejohn*
The Rayne Foundation^L
Stuart and Bianca Roden^L
Charles Rose*
Jackie Rosenfeld OBE, HonRCM*
The Rubinstein Circle
The Sampimon Trust^L
Julia Schottlander*
Richard Sennett and Saskia Sassen*
Sir Martin and Lady Smith*†
Elijah Spies
Nigel and Johanna Stapleton*
The Peter Stebbings Memorial Charity^L
The Stewarts Law Foundation^L
Derek Sugden
Anne and Paul Swain*
Alisa and Joshua Swidler*
Katja and Nicolai Tangen*
The Tertis Foundation
Allen L Thomas and Jane Simpson*
Robin Vousden*
Andrew and Hilary Walker*
Professor Janet Walker Cb and
Professor Doug Jones Ao*
Dame Fanny Waterman*
The Harold Hyam Wingate Foundation^L
Philip and Emeline Winston*
Youth Music^L
and several anonymous donors

* Rubinstein Circle members
^L Learning Programme supporters
† Early Music and Baroque Series supporters
‡ Contemporary Music Series supporters

WELCOME



© FRANCES MARSHALL

Wigmore Hall's artistic programme for the 2016/17 Season, outlined in this preview brochure, reflects our abiding commitment to the creative, the imaginative, the exhilarating, the extraordinary. Those attributes flow naturally from musicians of the highest calibre. This is why we are so determined to share our work with audiences worldwide, helped by our strong relationship with BBC Radio 3 and the launch of our own streamed concerts online from 2016. The Hall's acclaimed Learning programme, which attracts 23,000 visits a year, and our subsidised ticket scheme for under 35s are vital platforms as we reach out to existing and new audiences.

It is thanks to you – our loyal supporters and generous donors – that we can deliver the breadth and depth of the Hall's programme. Your support is essential. Without it we simply could not do what we do.

This year we must raise £1.7 million in private donations to give you the great experiences you expect from Wigmore Hall. Our programme comprises everything from concerts given by today's outstanding performers to ground-breaking special projects, artist residencies, new commissions and unique events.

With your help we can continue to attract the world's greatest artists, offer a platform for the most compelling emerging talent and reach audiences beyond the Hall, through our community programmes and online.

We thank you for playing such a decisive part in our development and we ask you to contribute whatever you can to the Hall's 2016/17 Annual Appeal.

A handwritten signature in black ink that reads "John Gilhooly". The signature is written in a cursive, flowing style. Below the signature is a horizontal line.

John Gilhooly OBE, HonFRAM, HonFGS, HonRCM
Director of Wigmore Hall

A REVIEW

Programme pioneers

Wigmore Hall promotes more concerts today than ever before, creating unique special projects and developing season-long series in collaboration with remarkable artists.

- The Hall is leading the way in protecting the song recital, presenting the largest song and chamber music series in the world.
- We have invested in our Early Music and Baroque Series, and confirmed our position as the leading international commissioner of contemporary music.
- We continue to invest in young and emerging talent.

Promoting so many of our own concerts is vital for us to maintain our place among the world's leading venues for chamber music and song.

'Over the past two years we have invested £2.1 million in the Hall's infrastructure'

Audience building

Demand for Wigmore Hall's work continues to grow with 12,000 people visiting Wigmore Hall for the first time in 2014/15. The Hall's audience widened again from March last year following the introduction of a bold subsidised ticket scheme funded for the 2015/16 Season by a legacy gift, which offers 10,000 £5 seats for evening concerts to people under the age of 35. The response to this scheme has been overwhelming and we hope to expand the scheme in time. We have also restructured our ticket pricing for the Wigmore Series, setting the bottom price for every evening performance at £15 or lower.

The Wigmore Hall Endowment

Income from the Hall's growing Endowment Fund (launched in 2013) helped to support two major projects which conclude in 2015/16: **Henry Purcell: A Retrospective** and **The Mozart Odyssey**, revelatory composer-led series scheduled across two seasons. In addition the Fund is also supporting our ambitious **Schubert: The Complete Songs** project in 2015/16 and 2016/17.

The impact of your donations

Thanks to your donations our programming can be bolder and more exciting than ever before. With an impressive number of premières and commissions performed next season, Wigmore Hall is regarded around the world as a leading force in the new music scene – a fact of which we can all be proud.

As we promote more of our own concerts at the Hall, we are able to ensure top quality music spanning all the genres of repertoire. Our investment in young artists is particularly rewarding throughout the season, allowing our audiences the first chance to hear exceptional musicians as they grow and develop.

Investment in the future of Wigmore Hall

Over the past two years we have invested £2.1 million in the Hall's infrastructure. A major refurbishment project, completed last summer, delivered up-to-date and comfortable facilities backstage, new seating in the auditorium and essential digital facilities to connect with a much wider audience. We launched our new website and online priority booking system in February 2015. We can begin streaming live concerts online from 2016.

2015/16 SEASON AT A GLANCE

200,000 attendances at Wigmore Hall

2,000+ artists performing

488 concerts at Wigmore Hall

384 own promotions

212 chamber music recitals

123 days with more than one concert

104 external promotions

90 individuals giving to specific projects

84 vocal recitals

62 piano recitals

51 early & baroque series concerts

47 contemporary music concerts

25 Wigmore Hall co-commissions

25 world premières

19 UK premières

7 London premières


1 European première

Avi Avital and Mahan Esfahani

**'these two players have learned to breathe
and move as one.'**

IVAN HEWETT, THE TELEGRAPH, 27 MAY 2015

Mahan Esfahani will be performing
on 21 December 2016 and 5 June 2017.
Avi Avital will be performing on
23 June 2017 (10.00pm)

A photograph of two pianists, Stephen Kovacevich and Martha Argerich, performing on a Steinway & Sons grand piano. Stephen Kovacevich is seated at the piano, wearing a black jacket and dark trousers, focused on his playing. Martha Argerich stands behind him, wearing a black top with a red and white pattern, her hands resting on the piano. The piano is a dark-colored grand piano with the Steinway & Sons logo and name visible on the fallboard. The background is a dark, wood-paneled wall. The lighting is warm, highlighting the musicians and the piano.

Stephen Kovacevich and Martha Argerich

'these were not minutely rehearsed concert-hall interpretations but the sound of two musicians connecting, playing for themselves.'

ERICA JEAL, GUARDIAN
3 NOVEMBER 2015

HOW YOU CAN HELP

THE 2016/17 ANNUAL APPEAL

Your support is our foundation and our future

The costs of running Wigmore Hall and of realising our bold vision for its future, including our plans to broadcast, are high.

Our audiences appreciate great moments of music here night after night, and we want as many people as possible to experience the musical riches that the Hall has to offer. Our Learning programmes are developed on the principle that people who might not otherwise access the Hall or any musical activity should have that opportunity. Our digital ambitions will allow us to broadcast and carry much more information on our concerts and Learning events online.

We need to raise £1.7 million in private donations to balance the shortfall projected for next season. Annual Friends and corporate membership dues will cover approximately 34% of that total, leaving just over £1.1 million to raise from additional donations, sponsorships and grants. We depend on your support to meet our costs and ensure that Wigmore Hall remains a place of artistic creativity, excellence and adventure.

YOUR DONATIONS

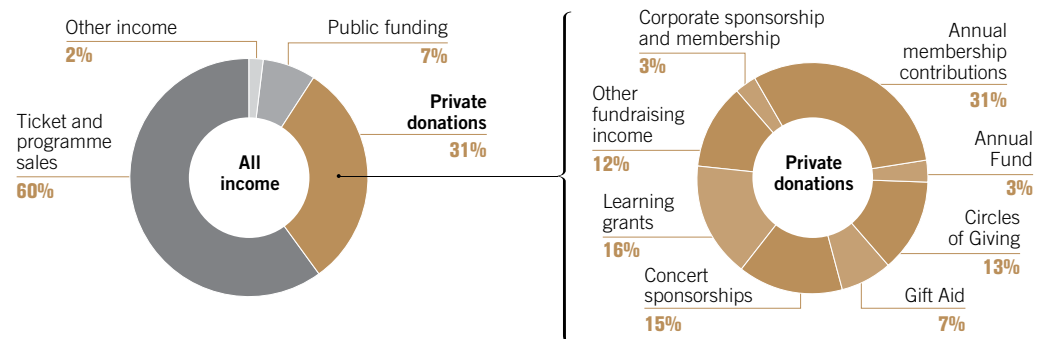
Your donations make all the difference and thanks to you we were able to make sure that the 2015/16 Season was properly funded. It is your generosity that helps transform Wigmore Hall's programme and extend its audience reach, and so we turn to you for support of the 2016/17 Season.

- **£5,200** would cover the average cost to stage a concert promoted by Wigmore Hall.
- 50 donations of **£1,000** would help subsidise the cost of offering 10,000 tickets at £5 every season for under 35s and the cost of free concert tickets for young people still at school.
- **£500** would allow us to film and record a concert or a workshop. This will help us to reach existing and new audiences, including schools, with essential online

resources which will support their concert-going experience and their connection with chamber music and song.

- With our expanding Early Music and Baroque Series, **£350** would cover the costs for an international baroque ensemble to have a day's rehearsal in London, including venue hire, instrument hire and tuning.
- Our pianos need tuning every day: **£100** would pay for a pre-concert piano tune.

Income in summary



Please support our 2016/17 Annual Appeal in any way you can. You can join one of our Circles of Giving (see page 9), or support our Annual Fund with a general donation of any amount you choose.

Thank you.

CONNECTING PEOPLE WITH MUSIC



© BENJAMIN BALOGGA

THE LEARNING PROGRAMME

Last season there were:

489 events

23,000 visits to the programme

We worked with:

88 schools, early years settings and home educated groups

700 teachers, care staff and support staff

care homes, hospitals and centres for homeless people

14

Top: a schools concert, in partnership with London Music Masters

Wigmore Hall Learning inspires and transforms. We are committed to providing creative music-making activity for people of all ages – helping them connect with music and each other. Our programmes take place here at the Hall and in the local community, in partnership with music hubs as well as health and social care organisations so that we can deliver activity to those who would most benefit.

We have forged strong partnerships with music hubs and service providers, and aim to create long-lasting relationships with schools, community settings and the individuals and families who participate in Learning projects.

- The Learning programme costs around £350,000 a year
- A typical eight-week project in a school, hospital or care home setting can cost from £4,000 and up to £10,000
- Three full-day workshops can cost around £1,000.

Learning at the Hall

Regular programmes at the Hall include:

- Schools concerts supporting the music curriculum across the key stages
- Family workshops and concerts throughout the year
- Study days, pre-concert talks, and masterclasses.

Building long-term partnerships with schools

Our long-standing Schools and Early Years Programme is now in its first year of *Partner Schools*, an initiative in which four under-resourced primary schools across London are supported to lead music making themselves and ultimately develop a long-term music strategy in collaboration with their local music hub and Wigmore Hall Learning.

Supporting people in challenging circumstances

Our Community Programme supports some of the most vulnerable people in society by exploring and developing their creative voices through music making, including:

- Children and young people in hospital
- Children and young people with Autistic Spectrum Disorders in partnership with the National Portrait Gallery and Turtle Key Arts
- Adults at the Cardinal Hume Centre who are homeless or at risk of homelessness
- People living with dementia and their carers: our flagship programme Music for Life aims to enhance participants' social and emotional well-being as well as the care they receive.

Wigmore Hall Learning's exceptional work needs continued investment. Your support can ensure that the programme continues to deliver the highest quality activity and reach the broadest spectrum of people.


To find out more about how you can support the Learning Programme, please contact Claire Goddard, Philanthropy Manager, by emailing cgoddard@wigmore-hall.org.uk or calling 020 7258 8220.

WIGMORE HALL
Learning

‘[Chamber Tots] had a profound effect on many children. Obviously their musical development... but more than that – it really helped their social development!’

HEAD TEACHER





Florian Boesch

**'Boesch doesn't just
sing this music,
he inhabits it to the hilt.'**

MICHAEL CHURCH, INDEPENDENT

Florian Boesch will be
performing on 6 April 2017.

CIRCLES OF GIVING



© DAVID BARBOUR

SEASON PATRONS 2016/17

£10,000 suggested annual donation

The exceptional commitment of Wigmore Hall's Season Patrons ensures the continuation of the visionary and diverse programming for which the Hall is internationally renowned, and enables us to engage the world's leading performers.

As the Hall's highest level donors, Season Patrons enjoy a close connection with the Director and receive personal invitations to exclusive events. Their contribution is acknowledged in all Wigmore Series brochures and donor listings, and our Development staff is dedicated to ensuring that our Season Patrons enjoy their special relationship with the Hall.

The support of the Season Patrons is marked at a series of concerts representing the breadth and quality of the entire season. At each of these a private reception is held for the Season Patrons who each receive four complimentary tickets and are credited in the concert programmes.



© JULIEN MIGNOT

CHAMBER MUSIC CIRCLE 2016/17

£5,000 suggested annual donation

Just as chamber music is at the heart of what we do at Wigmore Hall, the members of the Chamber Music Circle belong to our core group of supporters. Collectively, they ensure that the Hall's world-leading status in chamber music continues; that audiences can experience the world's greatest ensembles; and that the future of chamber music is secure through nurturing the next generation of talent.

The Circle members come together at four concerts during the season at which their engagement is especially recognised. Here they enjoy two complimentary tickets, private receptions, and opportunities for introduction to the artists. Chamber Music Circle members are credited in all Wigmore Series brochures and donor listings, invited by the Director to special events, and the Development staff ensures they can fully benefit from their close relationship with the Hall.



© JESSY LEE

VOICES AT WIGMORE 2016/17

SCHUBERT: THE COMPLETE SONGS

£2,000 suggested annual donation

The 2015/16 Season has seen the launch of a Schubert festival of song, with his complete Lieder being performed at the Hall over two seasons by both internationally acclaimed artists and emerging talent, made possible by a group of dedicated followers of song: Voices at Wigmore.

With a donation of £2,000 you can join this syndicate and become involved with one of the most ambitious artistic projects the Hall



© HANS MORREN

has ever hosted. Your contribution will be celebrated at three major concerts in this series, at which Voices members enjoy two complimentary tickets and a private interval reception. Voices at Wigmore members are credited in all series brochures and donor listings, and benefit from personal assistance with ticket bookings from our Development staff.

All concerts supported by our Circles of Giving are listed on page 14.

For further information on how you can join a Circle of Giving, please contact Marie-Hélène Osterweil, Director of Development, by emailing mhosterweil@wigmore-hall.org.uk or calling 020 7258 8220.

Thank you for your support.

2016/17 SEASON PREVIEW

SEASON HIGHLIGHTS

SARAH CONNOLLY

One of Britain's most distinguished singers, at the height of her powers, opens Wigmore Hall's 2016/17 Season in company with **Malcolm Martineau**.

SCHUBERT: THE COMPLETE SONGS

Wigmore Hall's critically acclaimed series continues with some 20 concerts, including *Schwanengesang* with **Ian Bostridge** and **Lars Vogt**, *Winterreise* with **Matthew Rose** and **Gary Matthewman**, and *Die schöne Müllerin* with **Henk Neven** and **Imogen Cooper**.

TAKÁCS QUARTET: BEETHOVEN STRING QUARTET CYCLE

Wigmore Hall's Associate Artists turn their collective experience to Beethoven's string quartets in a landmark series of six concerts.

ALISON BALSOM

Whether performing as soloist or speaking on behalf of music education, **Alison Balsom** invariably moves and inspires her audience. The virtuoso trumpeter takes her turn in the Wigmore Hall spotlight with four concerts.



IGOR LEVIT: BEETHOVEN PIANO SONATA CYCLE

Following his revelatory Perspectives series this season, **Igor Levit** returns for eight concerts comprising his first Beethoven piano sonata cycle in London.

THOMAS ADÈS DAY

Few contemporary composers have proved as consistently inventive as Thomas Adès. Wigmore Hall celebrates his eloquently expressive work with a day-long programme of chamber music, including the string quartets *Arcadiana* and *The Four Quarters*.

ARCANGELO: ARTIST FOCUS

Period-instrument ensemble **Arcangelo** and its dynamic artistic director **Jonathan Cohen**, described as a 'brilliant group of sound-makers', present four concerts certain to rank among the highlights of Wigmore Hall's Early Music and Baroque Series.

JANINE JANSEN SERIES

One of the world's finest violinists, a regular at Wigmore Hall, is the focus of a three-concert series.



HELEN GRIME: COMPOSER IN RESIDENCE

Known for her distinctive creative voice, **Helen Grime** becomes Wigmore Hall's first female Composer in Residence this season. A major focus day in October showcases Grime's Clarinet Concerto and other key chamber works, and her Piano Concerto will be performed in March.

SIR ANDRÁS SCHIFF: EVENING MASTERCLASSES

Wigmore Hall's Learning programme enters the evening concert mainstream with three masterclass sessions led by **Sir András Schiff**. A hand-picked group of outstanding young musicians will explore a selection of works, receiving practical advice and essential wisdom from one of the world's greatest pianists.

BACH ODYSSEY

Angela Hewitt begins a survey of Johann Sebastian Bach's complete keyboard works, while harpsichordist **Mahan Esfahani** launches his own Bach series with the *Goldberg Variations*.



FRANCESCO PIEMONTESE: MOZART PIANO SONATAS

Francesco Piemontesi, hailed by the Cleveland *Plain Dealer* as a 'stellar Mozartean', continues his complete survey of Mozart's piano sonatas.

EARLY MUSIC AND BAROQUE HIGHLIGHTS

The list of performers in 2016/17 includes **Les Arts Florissants**, **The Sixteen**, **Freiburg Baroque Orchestra**, the **Tallis Scholars**, the **Akademie für Alte Musik Berlin** and **Vox Luminis**. Italy's award-winning madrigal ensemble **La Venexiana** makes its debut and we also celebrate **Trevor Pinnock's** 70th birthday.

CONTEMPORARY MUSIC HIGHLIGHTS

Wigmore Hall reinforces its commitment to new work in 2016/17 with major concerts from the **JACK Quartet**, the **Arditti Quartet**, **Birmingham Contemporary Music Group** and **Ensemble intercontemporain**.



**‘she brings a fiery
originality
to everything she plays.’**

**MICHAEL CHURCH, INDEPENDENT
29 OCTOBER 2015**

**PATRICIA KOPATCHINSKAJA:
ARTIST IN RESIDENCE**

Armed with searching curiosity, profound feeling and visionary imagination, **Patricia Kopatchinskaja** belongs among the leading musicians of her generation. She performs at the Hall on 27 March, 26 April and 7 May 2017.



Ian Bostridge

© SIM CANEY/CURAGE

SONG RECITAL SERIES

FRI 9 SEP
Sarah Connolly *mezzo-soprano*
Malcolm Martineau *piano*

SAT 10 SEP
Soile Isokoski *soprano*
Ilkka Paananen *piano*

TUE 13 SEP
Schubert Song Series:
Mark Padmore *tenor*
James Baillieu *piano*

TUE 20 SEP
James Gilchrist *tenor*
Anna Tilbrook *piano*

SAT 1 OCT
Barbara Hannigan *soprano*
Calder Quartet

WED 12 OCT
Christian Gerhaher *baritone*
Gerold Huber *piano*

THU 20 OCT
Schubert Song Series:
Christoph Prégardien *tenor*
Christoph Schnackertz *piano*

SUN 23 OCT
Jamie Barton *mezzo-soprano*
James Baillieu *piano*

FRI 28 OCT
The Prince Consort
Stephen Hough *piano*

SAT 5 NOV
Schubert Song Series:
Dorothea Röschmann *soprano*
Malcolm Martineau *piano*

TUE 8 NOV 1.00PM & 7.30PM
Samling Showcase:
20th Anniversary

THU 10 NOV
Iestyn Davies *countertenor*
Thomas Dunford *lute*

MON 14 NOV
Ian Bostridge *tenor*
Sir Antonio Pappano *piano*
Elizabeth Kenny *theorbo*
Lawrence Power *viola*
Adam Walker *flute*

FRI 18 NOV
Adrienne Pieczonka *soprano*
Brian Zeger *piano*

SUN 20 NOV
Luca Pisaroni *bass-baritone*

THU 24 NOV
Schubert Song Series:
Stuart Jackson *tenor*
Marcus Farnsworth *baritone*
James Baillieu *piano*

MON 5 DEC
Anne Schwanewilms *soprano*
Malcolm Martineau *piano*

THU 8 DEC
Schubert Song Series:
Stephan Loges *bass-baritone*
Graham Johnson *piano*

SAT 17 DEC
René Pape *bass*
Camillo Radicke *piano*

TUE 3 JAN
John Chest *baritone*
Marcelo Amaral *piano*

SUN 8 JAN 3.00PM
Timothy Fallon *tenor*
Ammiel Bushakevitz *piano*

WED 18 JAN
Schubert Song Series:
Georg Nigl *baritone*
Andreas Staier *fortepiano*

SUN 22 JAN 3.00PM
Royal Academy of Music
Richard Lewis Song Circle

FRI 27 JAN
Alice Coote *mezzo-soprano*

SUN 29 JAN 3.00PM
Tim Mead *countertenor*

SUN 29 JAN
Stéphane Degout *baritone*
Cédric Tiberghien *piano*



Elizabeth Watts

© MARCO BORGREVE

THU 2 FEB
Schubert Song Series:
Elizabeth Watts *soprano*
Malcolm Martineau *piano*

WED 15 FEB
Schubert Song Series:
Matthew Rose *bass*
Gary Matthewman *piano*

FRI 17 FEB
Schubert Song Series:
Mauro Peter *tenor*

SUN 19 FEB 3.00PM
Louise Alder *soprano*
Gary Matthewman *piano*

FRI 24 FEB
Matthias Goerne *baritone*

SUN 26 FEB 3.00PM
Nicholas Phan *tenor*

SUN 12 MAR 3.00PM
Ilker Arcayürek *tenor*
Simon Lepper *piano*

SUN 12 MAR
Ekaterina Semenchuk *mezzo-soprano*
Joseph Middleton *piano*

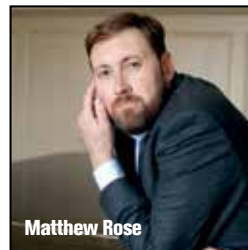
TUE 14 MAR
Schubert Song Series:
Christoph Prégardien *tenor*
Julius Drake *piano*

MON 20 MAR
David Daniels *countertenor*

THU 6 APR
Bernarda Fink *mezzo-soprano*
Ensemble Prisma Wien

SAT 8 APR
Toby Spence *tenor*
Julian Milford *piano*

TUE 11 APR
Schubert Song Series:
Henk Neven *baritone*
Imogen Cooper *piano*



Matthew Rose

© LEINA KEHN

WED 26 APR 1.30PM
Ferrier Award 2017
Semi-Final

FRI 28 APR 6.00PM
Ferrier Award 2017 Final

SUN 30 APR 3.00PM
Milan Siljanov *bass-baritone*
Nino Chokhonelidze *piano*

MON 1 MAY
Maximilian Schmitt *tenor*
Gerold Huber *piano*

SAT 6 MAY
Karita Mattila *soprano*
Ville Matvejeff *piano*

WED 10 MAY
Schubert Song Series:
Ian Bostridge *tenor*
Lars Vogt *piano*

SAT 13 MAY
Schubert Song Series:
Violeta Urmana *mezzo-soprano*

SUN 14 MAY 3.00PM
Simon Bode *tenor*
Igor Levit *piano*

SUN 21 MAY 3.00PM
Christoph Pohl *baritone*
Marcelo Amaral *piano*

SUN 28 MAY
Christina Landshamer *soprano*
Gerold Huber *piano*

THU 8 JUN
Schubert Song Series:
Anna Lucia Richter *soprano*
Michael Gees *piano*

SUN 11 JUN
Schubert Song Series:
Simon Keenlyside *baritone*

SAT 17 JUN
Schubert Song Series:
Florian Boesch *baritone*

SUPPORT A CONCERT

Many of the concerts listed here are available for private support or sponsorship. For further information please contact the Development Office on 020 7258 8220.

MON 19 JUN
André Schuen *baritone*
Daniel Heide *piano*

THU 22 JUN
Matthew Polenzani *tenor*

SUN 2 JUL
Schubert Song Series:
Markus Schäfer *tenor*
Piers Lane *piano*

SUN 9 JUL
Schubert Song Series:
Ian Bostridge *tenor*
Graham Johnson *piano*

WED 12 JUL
Aida Garifullina *soprano*

THU 13 JUL
A Shakespeare Songbook:
Sophie Bevan *soprano*
Allan Clayton *tenor*
Christopher Glynn *piano*

SAT 15 JUL
Christian Gerhaher *baritone*
Gerold Huber *piano*

WED 19 JUL
Schubert Song Series:
Elisabeth Kulman *mezzo-soprano*

SAT 22 JUL
Andrei Bondarenko *baritone*

WED 26 JUL
Carolyn Sampson *soprano*

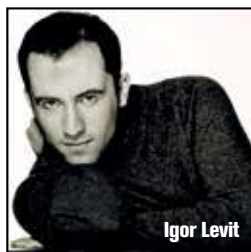
DATE TO BE CONFIRMED
Schubert Song Series:
Robert Holl *baritone*
Sir Andrés Schiff *piano*



© MANWOLF PHOTOGRAPHY



© NADIA F. ROMANINI



© FELIX BROEDE



© PETER SMITH

LONDON PIANOFORTE SERIES

SUN 11 SEP
Denis Kozhukhin *piano*

THU 15 SEP
Yulianna Avdeeva *piano*

SAT 17 SEP
Jeremy Denk *piano*

SUN 25 SEP
The Bach Odyssey:
Angela Hewitt *piano*

WED 28 SEP
Beethoven Cycle:
Igor Levit *piano*

MON 3 OCT
Jan Lisiecki *piano*

SUN 9 OCT
Beethoven Cycle:
Igor Levit *piano*

TUE 11 OCT
Llŷr Williams *piano*

THU 13 OCT
Melvyn Tan *piano*

WED 19 OCT
Leon McCawley *piano*

TUE 25 OCT
Sunwook Kim *piano*

SAT 29 OCT
Philippe Cassard *piano*

THU 3 NOV
Alexei Volodin *piano*

MON 7 NOV
Beethoven Cycle:
Igor Levit *piano*

WED 9 NOV
Christian Zacharias *piano*

THU 17 NOV
Imogen Cooper *piano*

TUE 29 NOV
Sir András Schiff *piano*

SAT 3 DEC
Richard Goode *piano*

TUE 6 DEC
Beethoven Cycle:
Igor Levit *piano*

WED 7 DEC
Andreas Staier *fortepiano*

THU 15 DEC
Mozart Cycle:
Francesco Piemontesi *piano*

FRI 20 JAN
The Bach Odyssey:
Angela Hewitt *piano*

THU 26 JAN
Elisabeth Leonskaja *piano*

MON 30 JAN
Beethoven Cycle:
Igor Levit *piano*

FRI 10 FEB
Nikolai Demidenko *piano*

THU 16 FEB
Llŷr Williams *piano*

TUE 21 FEB
Sir András Schiff *piano*

SUN 26 FEB
Beethoven Cycle:
Igor Levit *piano*

THU 2 MAR
Paul Lewis *piano*

SAT 4 MAR
Paul Lewis *piano*

SAT 11 MAR
Pierre-Laurent Aimard *piano*

FRI 17 MAR
Beethoven Cycle:
Igor Levit *piano*

WED 22 MAR
Steven Osborne *piano*

THU 30 MAR
Leif Ove Andsnes *piano*
Marc-André Hamelin *piano*

WED 5 APR
Alexander Melnikov *piano*

WED 19 APR
Yevgeny Sudbin *piano*

SUN 23 APR
Andreas Haefliger *piano*

TUE 2 MAY
Sir András Schiff *piano*

THU 4 MAY
Mozart Cycle:
Francesco Piemontesi *piano*

FRI 12 MAY 7.00PM
Joanna MacGregor *piano*

SAT 20 MAY
Llŷr Williams *piano*

WED 24 MAY
Nikolai Lugansky *piano*

SUN 4 JUN
Christian Ihle Hadland *piano*

SAT 10 JUN
The Bach Odyssey:
Angela Hewitt *piano*

TUE 13 JUN
Beethoven Cycle:
Igor Levit *piano*

TUE 27 JUN
Inon Barnatan *piano*

TUE 4 JUL
Håvard Gimse *piano*

THU 27 JUL
Cédric Tiberghien *piano*

CHAMBER MUSIC SEASON

FRI 16 SEP
Daniel Hope *violin*
Paul Neubauer *viola*
David Finckel *cello*
Wu Han *piano*

SUN 18 SEP
Les Vents Français
wind quintet

FRI 23 SEP
The Endellion String Quartet

SAT 24 SEP
Aurora Orchestra

FRI 30 SEP
Busch Project:
Renaud Capuçon *violin*
Other artists
to be announced

THU 6 OCT
IMS Prussia Cove

FRI 7 OCT
Pavel Haas Quartet
Harriet Krijgh *cello*

SAT 8 OCT
Janine Jansen Residency:
Janine Jansen *violin*
Alexander Gvarylyuk *piano*

SAT 15 OCT
Helen Grime Day

SAT 22 OCT
Nash Ensemble

THU 27 OCT
Thomas Zehetmair *violin*
Ruth Killius *viola*

MON 31 OCT
Alison Balsom Residency:
Alison Balsom *trumpet*
Tom Poster *piano*

WED 2 NOV
40th Anniversary Season
**Kalichstein/Laredo/
Robinson Trio**

FRI 4 NOV
**Beethoven/Shostakovich
Cycle:**
Borodin Quartet

SUN 6 NOV
**Beethoven/Shostakovich
Cycle:**
Borodin Quartet

FRI 11 NOV
Music in the Round weekend:
Ensemble 360

SAT 12 NOV
Music in the Round weekend:
Ensemble 360

SUN 13 NOV
40th Anniversary Series
Emerson String Quartet

SAT 19 NOV
Nash Ensemble

WED 23 NOV
Truls Mørk *cello*
Håvard Gimse *piano*

FRI 25 NOV
Ensemble Modern

SAT 26 NOV
Arditti Quartet

SAT 10 DEC
Nash Ensemble
Christianne Stotijn
mezzo-soprano

SUN 11 DEC
Belcea Quartet

TUE 13 DEC
St. Lawrence String Quartet

WED 14 DEC 1.00PM
Britten Sinfonia

TUE 20 DEC
Alison Balsom Residency:
Balsom Ensemble

TUE 27 DEC
Sitkovetsky Trio

WED 28 DEC
Doric String Quartet

FRI 30 DEC
Gringolts Quartet

SAT 7 JAN
Cuarteto Casals

SUN 8 JAN
Cuarteto Casals

CONCERTS SUPPORTED BY CIRCLES OF GIVING

SEASON PATRONS 2016/17

WED 12 OCT
Christian Gerhaher *baritone*
Gerold Huber *piano*

TUE 22 NOV
Dunedin Consort

MON 16 JAN
Les Arts Florissants

MON 27 MAR
Patricia Kopatchinskaja
Residency:
Patricia
Kopatchinskaja *violin*
Polina Leschenko *piano*

WED 17 MAY
Takács Quartet

TUE 13 JUNE
Igor Levit *piano*

CHAMBER MUSIC CIRCLE 2016/17

TUE 29 NOV
Sir András Schiff *piano*

THU 9 FEB
Jörg Widmann *clarinet*
Mitsuko Uchida *piano*

WED 26 APR
Patricia Kopatchinskaja
Residency:
Patricia
Kopatchinskaja *violin*
Sol Gabetta *cello*

SUN 18 JUN
Quatuor Ebène

VOICES AT WIGMORE 2016/17

TUE 13 SEP
Schubert Song Series:
Mark Padmore *tenor*
James Baillieu *piano*

TUE 14 MAR
Schubert Song Series:
Christoph Prégardien *tenor*
Julius Drake *piano*

THU 8 JUN
Schubert Song Series:
Anna Lucia Richter *soprano*
Michael Gees *piano*

Janine Jansen

**'Janine Jansen is a player
that you follow
wherever she leads.'**

THE TIMES, FEBRUARY 2012

For further information on how you can support these concerts, please see page 9, or contact Marie-Hélène Osterweil, Director of Development, by emailing mhosterweil@wigmore-hall.org.uk or calling 020 7258 8220.

Janine Jansen will be performing at the Hall on 8 October 2016, 8 February 2017 and 2 June 2017.



© ANDY STAPLES

CHAMBER MUSIC SEASON (CONTINUED)

MON 9 JAN
Danish String Quartet

SAT 14 JAN
Vienna Piano Trio

SUN 15 JAN
**IMS Prussia Cove
Celebration Concert**

THU 19 JAN
Julia Fischer violin

SAT 21 JAN
**Nash Ensemble
Lucy Crowe soprano
Martyn Brabbins conductor**

MON 23 JAN
**Philip Higham cello
Alasdair Beatson piano**

WED 25 JAN
Signum Quartet

THU 26 – SAT 28 JAN
ECMA Showcase 2017

TUE 31 JAN
Gould Piano Trio

WED 8 FEB 1.00PM
Britten Sinfonia

WED 8 FEB
**Janine Jansen Residency:
Janine Jansen violin
Other artists
to be announced**

THU 9 FEB
**Jörg Widmann clarinet
Mitsuko Uchida piano**

SAT 11 FEB
Nash Ensemble

SUN 12 FEB
Belcea Quartet

TUE 14 FEB
Razumovsky Ensemble

SAT 18 FEB
**Scottish Ensemble
Alina Ibragimova violin**

SUN 19 FEB
**Isabelle Faust violin
Alexander Melnikov piano**

THU 23 FEB
**Artemis Quartet
Maria João Pires piano**

SAT 25 FEB 11.00AM
**Xenakis Day:
JACK Quartet**

WED 1 MAR
Carducci String Quartet

FRI 3 MAR
**Birmingham Contemporary
Music Group
Huw Watkins piano
Oliver Knussen conductor**

TUE 7 MAR
**Alisa Weilerstein cello
Inon Barnatan piano**

WED 8 MAR
**The Endellion String
Quartet**

FRI 10 MAR
**Pacifica Quartet
Johannes Moser cello**

WED 15 MAR 1:00PM
Britten Sinfonia

THU 16 MAR
**Hilary Hahn violin
Cory Smythe piano**

TUE 21 MAR
Nash Ensemble

SAT 25 MAR 11.00AM
Thomas Adès Day

MON 27 MAR
**Patricia Kopatchinskaja
Residency:
Patricia Kopatchinskaja violin
Polina Leschenko piano**

FRI 31 MAR
**Haydn & Dvořák Trios:
Eggner Trio**

SUN 2 APR
**Nikolaj Znaider violin
Piotr Anderszewski piano**

TUE 4 APR
Miloš Karadaglić guitar

FRI 7 APR
**Jean-Guihen Queyras cello
Sokratis Sinopoulos lyra
Chemirani Brothers zarb**

THU 13 APR
**Sergey Khachatryan violin
Lusine Khachatryan piano**

SAT 15 APR
**Steven Isserlis cello
Dénes Várjon piano**

TUE 18 APR
**Daniel Hope violin
Basel Chamber Orchestra**

WED 19 APR 1.00PM
Britten Sinfonia

SAT 22 APR
**Soloists of the
London Philharmonic
Orchestra**

WED 26 APR
**Patricia Kopatchinskaja
Residency:
Patricia Kopatchinskaja violin
Sol Gabetta cello**

SAT 29 APR
Hagen Quartet

SUN 30 APR
Hagen Quartet

FRI 5 MAY 7.00PM
**Chamber Music Society
of Lincoln Center**

SUN 7 MAY
**Patricia Kopatchinskaja
Residency:
Patricia Kopatchinskaja violin
Anthony Romaniuk
harpsichord, piano**

MON 8 MAY
**Sainsbury Royal Academy
Soloists
Clio Gould director**

THU 11 MAY
Elias String Quartet

SUN 14 MAY
**Beethoven Cycle:
Takács Quartet**

THU 18 MAY
**Alison Balsom Residency:
Alison Balsom trumpet
Trevor Pinnock harpsichord
Thomas Dunford lute
guest singers**

SUN 21 MAY
Jerusalem Quartet

TUE 23 MAY
The Endellion String Quartet

FRI 26 MAY 7.00PM
Escher String Quartet

WED 31 MAY
Alina Ibragimova violin

THU 1 JUN
**Beethoven/Shostakovich
Cycle:
Borodin Quartet**

FRI 2 JUN
**Janine Jansen Residency:
Janine Jansen violin
Other artists
to be announced**

SAT 3 JUN
**Beethoven/Shostakovich
Cycle:
Borodin Quartet**

TUE 6 JUN
**Razumovsky
Ensemble**

WED 14 JUN
**Arditti Quartet
Eliot Fisk guitar**

THU 15 JUN
**Nicolas Altstaedt cello
Alexander Lonquich piano**

FRI 16 JUN
Jasper String Quartet

SUN 18 JUN
Quatuor Ebène

TUE 20 JUN
Ensemble intercontemporain

MON 26 JUN
**Vienna Piano Trio
Mark Padmore tenor**

WED 28 JUN
**Edgar Moreau cello
Pierre-Yves Hodique piano**

SAT 1 JUL
Doric String Quartet

THU 6 JUL
Andreas Ottensamer clarinet

MON 10 JUL
Gould Piano Trio

SUN 16 JUL
Quatuor Mosaïques

MON 24 JUL
**Steven Isserlis cello
Joshua Bell violin**

TUE 25 JUL
**Steven Isserlis cello
Joshua Bell violin**



SUNDAY MORNING COFFEE CONCERTS

SUN 11 SEP
Danish String Quartet

SUN 18 SEP
Nick van Bloss piano

SUN 25 SEP
**Jack Liebeck violin
Amandine Savary piano**

SUN 2 OCT
Quatuor Van Kuijk

SUN 9 OCT
Scottish Ensemble

SUN 16 OCT
Dover Quartet

SUN 23 OCT
Nash Ensemble

SUN 30 OCT
Carducci String Quartet

SUN 6 NOV
Endymion

SUN 13 NOV
**Music in the Round
weekend:
Ensemble 360**

SUN 20 NOV
Maximilian Hornung cello

SUN 27 NOV
Tai Murray violin

SUN 4 DEC
Atrium Quartet



© ATRINA JAMBOR



© ADAM SWANN



© MARCO BORGREVE



© DECCA / LULI WEBER

SUNDAY MORNING COFFEE CONCERTS (CONTINUED)

SUN 11 DEC
Adrian Brendel *cello*

SUN 18 DEC
**Cassard/Grimal/
Gastinel Trio**

SUN 8 JAN
Novus String Quartet

SUN 15 JAN
Nikita Boriso-Glebsky *violin*

SUN 22 JAN
Elias String Quartet

SUN 29 JAN
Amaryllis Quartet

SUN 5 FEB
Nash Ensemble

SUN 12 FEB
Trio con Brio Copenhagen

SUN 19 FEB
Lara Melda *piano*

SUN 26 FEB
Quatuor Voce

SUN 5 MAR
Arcadia Quartet

SUN 12 MAR
Simone Lamsma *violin*

SUN 19 MAR
Meccore Quartet

SUN 26 MAR
Tamar Beraia *piano*

SUN 2 APR
Dante Quartet

SUN 9 APR
Colin Carr *cello*

SUN 16 APR
Castalian Quartet

SUN 23 APR
Ivana Gavrić *piano*

SUN 30 APR
Caroline Goulding *violin*

SUN 7 MAY
Saleem Ashkar *piano*

SUN 14 MAY
Jakob Koranyi *cello*

SUN 21 MAY
Armida Quartet

SUN 28 MAY
Schumann Quartet

SUN 4 JUN
Trio Shaham Erez Wallfisch
piano trio

SUN 11 JUN
Natalia Prischepenko *violin*

SUN 18 JUN
Michelangelo String Quartet

SUN 25 JUN
Vienna Piano Trio

SUN 2 JUL
Doric String Quartet

SUN 9 JUL
Navarra String Quartet

SUN 16 JUL
Quatuor Zaïde

SUN 23 JUL
Chloë Hanslip *violin*
Danny Driver *piano*

SUN 30 JUL
Gemma Rosefield *cello*
Tim Horton *piano*

EARLY MUSIC AND BAROQUE SERIES

MON 12 SEP
The Brabant Ensemble
Stephen Rice *director*

WED 14 SEP
The English Concert

MON 19 SEP
Classical Opera

THU 22 SEP
Freiburg Baroque Orchestra
Kristian Bezuidenhout *director,*
fortepiano

THU 29 SEP
Max Emanuel Cencic
countertenor
Il Pomo d'Oro
Maxim Emelyanychev
conductor

SUN 2 OCT
Nathalie Stutzmann *contralto*
Orfeo 55

WED 5 OCT
Anna Bonitatibus *mezzo-soprano*
Collegium 1704

FRI 14 OCT
The Cardinal's
Musick

FRI 21 OCT
Le Poème Harmonique

MON 24 OCT
Phantasm

WED 26 OCT
Florilegium

SUN 30 OCT
Ton Koopman *conductor,*
harpsichord
Amsterdam Baroque
Orchestra

TUE 15 NOV
Le Concert d'Astrée
Emmanuelle Haïm *conductor*

TUE 22 NOV
Dunedin Consort

MON 28 NOV
La Nuova Musica
David Bates *director*

THU 1 DEC
Philippe Jaroussky *countertenor*
La Loge Olympique
Julien Chauvin *violin, director*

SUN 4 DEC
Collegium Vocale Gent

WED 14 DEC
Arcangelo

FRI 16 DEC
Trevor Pinnock
70th Birthday Concert

MON 19 DEC
The King's Consort

WED 21 DEC
Mahan Esfahani *harpsichord*

THU 22 DEC
Vox Luminis

FRI 23 DEC
Akademie für Alte
Musik Berlin

THU 29 DEC
Roberta Invernizzi *soprano*
Sonia Prina *contralto*
Ensemble Claudiana

SAT 31 DEC 7.00PM
The English Concert

WED 11 JAN
La Venexiana

FRI 13 JAN
Arcangelo
Kristian Bezuidenhout
harpsichord

MON 16 JAN
Les Arts Florissants
Paul Agnew *director*

TUE 17 JAN
Classical Opera

SAT 28 JAN
Karina Gauvin *soprano*
La Loge Olympique

TUE 7 FEB
The English Concert
Rachel Podger *guest director,*
violin

MON 20 FEB
The Sixteen

TUE 28 FEB
Theatre of the Ayre
Elizabeth Kenny *director*

THU 9 MAR
The Tallis Scholars

THU 23 MAR
The King's Consort

WED 29 MAR
Early Opera Company

SAT 1 APR
EXAUDI

SUN 9 APR
Les Talens Lyriques

MON 10 APR
Ensemble Plus Ultra

WED 12 APR
Le Concert Spirituel

MON 17 APR
London Handel
Orchestra

THU 20 APR
Thomas Dunford *lute*

TUE 16 MAY
Classical Opera
Ian Page *conductor*
Kristian Bezuidenhout
fortepiano

WED 7 JUN
The English Concert

WED 21 JUN
The King's Consort

SAT 24 JUN
Cecilia Bartoli
mezzo-soprano
Philippe Jaroussky
countertenor
Ensemble Artaserse

SUN 25 JUN
Telemann
250th Anniversary Concert
Florilegium

THU 29 JUN
**Akademie für Alte Musik
Berlin**
Isabelle Faust *violin*

FRI 30 JUN
The Sixteen

TUE 18 JUL
The Cardinal's Musick

FRI 21 JUL 7:00PM
Arcangelo



© DORIC STRING QUARTET

BBC LUNCHTIME CONCERTS

MON 12 SEP
Mark Padmore *tenor*
Morgan Szymanski *guitar*

MON 19 SEP
Håkan Hardenberger *trumpet*
Roland Pöntinen *piano*

MON 26 SEP
Doric String Quartet

MON 3 OCT
Steven Isserlis *cello*
Olli Mustonen *piano*

MON 10 OCT
Nicholas Angelich *piano*

MON 17 OCT
Vilde Frang *violin*

MON 24 OCT
Nelson Goerner *piano*

MON 31 OCT
Kelemen Quartet

MON 7 NOV
Marie-Elisabeth Hecker *cello*
Martin Helmchen *piano*

MON 14 NOV
Javier Perianes *piano*
Quartet Quiroga

MON 21 NOV
Garrick Ohlsson *piano*

MON 28 NOV
Ilker Arcayürek *tenor*
Simon Lepper *piano*

MON 5 DEC
Boris Gilburg *piano*

MON 12 DEC
Emmanuel Pahud *flute*

MON 19 DEC
Miklós Perényi *cello*

MON 9 JAN
Richard Egarr *harpsichord*

MON 16 JAN
Beatrice Rana *piano*

MON 23 JAN
Roderick Williams *baritone*
Roger Vignoles *piano*

MON 30 JAN
Peter Moore *trombone*

MON 6 FEB
Isabelle Faust *violin*
Andreas Staier *fortepiano*

MON 13 FEB
Kathryn Rudge *mezzo-soprano*
James Baillieu *piano*

MON 20 FEB
Quatuor Van Kuijk

MON 27 FEB
David Greilsammer *piano*

MON 6 MAR
Carolyn Sampson *soprano*
Matthew Wadsworth *lute*

MON 13 MAR
Kungsbacka Piano Trio

MON 20 MAR
Annelien Van Wauwe *clarinet*
Nino Gvetadze *piano*

MON 27 MAR
Gallicantus

MON 3 APR
Apollon Musagète Quartet

MON 10 APR
Sarah Connolly *mezzo-soprano*

MON 17 APR
Alessio Bax *piano*

MON 24 APR
Louis Lortie *piano*

MON 1 MAY
Lawrence Zazzo *countertenor*
Other artists
to be announced

MON 8 MAY
Véronique Gens *soprano*

MON 15 MAY
Tasmin Little *violin*
John Lenehan *piano*

MON 22 MAY
Phantasm

MON 29 MAY
Zemlinsky Quartet

MON 5 JUN
Mahan Esfahani *harpsichord*

MON 19 JUN
Carducci String Quartet

MON 26 JUN
Clara Mouriz *mezzo-soprano*

MON 3 JUL
Maurice Steger *recorder*

MON 10 JUL
Hanno Müller-Brachmann
bass baritone



© VIJAY IYER

JAZZ

FRI 9 DEC
Christian McBride
Jazz Series:
Christian McBride *double bass*

FRI 6 JAN
Vijay Iyer Jazz Series:
Vijay Iyer *piano*
Other artists
to be announced

THU 20 JUL
Vijay Iyer Jazz Series:
Vijay Iyer *piano*
Other artists
to be announced

WORLD MUSIC

FRI 2 DEC
The Other Classical Musics

FRI 7 APR
Jean-Guihen Queyras *cello*
Sokratis Sinopoulos *lyra*
Chemirani Brothers *zarb*



© ASTRID KARGER

CONTEMPORARY

TUE 20 SEP
James Gilchrist *tenor*
Anna Tilbrook *piano*

SAT 24 SEP
Aurora Orchestra

SAT 1 OCT
Barbara Hannigan *soprano*
Calder Quartet

SAT 15 OCT
Helen Grime Composer
in Residence:
Birmingham Contemporary
Music Group
Mark van de Wiel *clarinet*
Huw Watkins *piano*
Other artists
to be announced

FRI 28 OCT
The Prince Consort
Stephen Hough *piano*

FRI 25 NOV
Ensemble Modern

SAT 26 NOV
Arditti Quartet

SUN 11 DEC
Belcea Quartet

WED 25 JAN
Signum Quartet

THU 9 FEB
Jörg Widmann *clarinet*
Mitsuko Uchida *piano*

SAT 25 FEB
Xenakis Day:
JACK Quartet

FRI 3 MAR
Helen Grime Composer
in Residence:
Birmingham Contemporary
Music Group
Huw Watkins *piano*
Oliver Knussen *conductor*

FRI 10 MAR
Pacifica Quartet
Johannes Moser *cello*

SAT 25 MAR
Thomas Adès Day:
Birmingham Contemporary
Music Group
Other artists
to be announced

THU 11 MAY
Elias String Quartet

WED 14 JUN
Arditti Quartet
Eliot Fisk *guitar*

FRI 16 JUN
Jasper String Quartet

TUE 20 JUN
Ensemble intercontemporain

BOOKING TICKETS

Priority Booking for Wigmore Series concerts from September to December, and for concerts in the Contemporary Music Series, opens on 5 May 2016, for concerts from January to March opens on 13 October 2016, and for concerts from April to July opens on 12 January 2017.

Details of artists and dates are correct at time of printing but may be subject to change.

Trevor Pinnock

'Pinnock had that ease that comes from long experience, which allowed him to be flamboyant at times'

IVAN HEWETT, DAILY TELEGRAPH

Trevor Pinnock will be celebrating his 70th birthday with a concert on 16 December 2016, and performing with Alison Balsom (left) at the Hall on 18 May 2017.



THE 2016/17 SEASON ANNUAL APPEAL

DONATION FORM

Personal details

Title _____

First name _____

Surname _____

Address _____

Postcode _____

Email _____

Telephone _____

My contribution

I/We would like to make a contribution to Wigmore Hall's 2016/17 Season of:

£1,000* £500
 £350 £100 Other £ _____

Note that gifts can be paid in 10 monthly instalments by Direct Debit. (See overleaf)

I would like to pledge my donation for

1 year 2 years 3 years

(a longer-term commitment will have a significant impact on our ability to plan seasons ahead).

If you are interested in making a donation to one of the Circles of Giving, or would like further information, please tick here, and we will be in touch with you.

Please acknowledge my/our gift as:

If you would prefer your gift to be anonymous, please write Anonymous.

giftaid it

Give more at no extra cost to you

All donations from individuals who pay tax in the UK are eligible for Gift Aid. Please tick the 'Gift Aid' box below so that we can reclaim the basic income tax that you have already paid; an extra 25 pence on every pound you have given, at no extra cost to you.

Gift Aid Declaration – UK taxpayers only

Please tick the box

- I confirm that I am a UK tax payer and would like The Wigmore Hall Trust to treat all donations I have made in the past four years and all future donations that I make from the date of this declaration as Gift Aid donations.
- I confirm I have paid or will pay an amount of Income Tax and/or Capital Gains Tax for each tax year (6 April to 5 April) that is at least equal to the amount of tax that all the charities or Community Amateur Sports Clubs (CASCs) that I donate to will reclaim on my gifts for that tax year. I understand that other taxes such as VAT and Council Tax do not qualify.
- I understand The Wigmore Hall Trust will reclaim 25p of tax on every £1 that I have given.

Signature _____

Date _____

*Gifts of £1,000 and over will be acknowledged in the concert programmes from April 2016 until the end of the 2016/17 Season.

Please send completed forms to:

Marie-Hélène Osterweil, Director of Development
Freepost RTLK-KBUX-KTUH, Friends Office,
Wigmore Hall, 36 Wigmore Street, London W1U 2BP

The Wigmore Hall Trust • Registered Charity No. 1024838

Gift Aid information

If you pay income tax at the higher rate, you must include all your Gift Aid Donations on your Self Assessment tax return if you want to receive the additional tax relief due to you. Please notify The Wigmore Hall Trust if your circumstances change and you no longer pay tax.



Payment methods

Please select from the following:

- I enclose a cheque/charity voucher for £ _____
made payable to The Wigmore Hall Trust
- I would like to pay in 10 instalments by Direct Debit
(Please fill out the Direct Debit instruction opposite)
- Please charge £ _____ to my Visa/Mastercard/
Amex/CAF card (Delete as appropriate)

Card no.

--	--	--	--	--	--	--	--	--	--	--	--	--	--	--	--	--	--	--	--

Expiry date / Start date /

Switch issue no. Security no.

Signature(s)

Date

Direct Debit Instruction



If you would like to make your gift in instalments via a monthly direct debit over the next 10 months, please tick the amount you would like to donate every month and complete the Direct Debit Instruction below. Your account will be debited on or around the last day of each month.

- £100 per month £50 per month
- £35 per month £10 per month Other £ _____ per month

To: The Manager

Bank/Building Society

Address

Postcode

Name(s) of Account Holder(s)

Account Number

--	--	--	--	--	--	--	--	--	--	--

Branch Sort Code

--	--	--	--	--	--

Originator's Identification No.

8	3	6	8	4	1
---	---	---	---	---	---

Instructions to your Bank or Building Society to pay by Direct Debit
Please pay The Wigmore Hall Trust Direct Debits from the account detailed in this instruction subject to the safeguards assured by the Direct Debit Guarantee. I understand that this instruction may remain with The Wigmore Hall Trust and, if so, details will be passed electronically to my Bank or Building Society.

Signature(s)

Date

NB Banks and Building Societies may not accept Direct Debit Instructions for some types of account. Faxed or photocopied Direct Debit instructions are not acceptable.

**THANK YOU
FOR SUPPORTING
THE 2016/17 SEASON
ANNUAL APPEAL**

The Direct Debit Guarantee

This guarantee should be retained by the Payer. This guarantee is offered by all Banks and Building Societies that take part in the Direct Debit Scheme. The efficiency and security of the Scheme is monitored and protected by your own Bank or Building Society. If the amount(s) to be paid or the payment dates change The Wigmore Hall Trust will notify you ten working days in advance of your account being debited or as otherwise agreed. If an error is made by The Wigmore Hall Trust or your Bank or Building Society, you are guaranteed a full and immediate refund from your branch of the amount paid. You can cancel a Direct Debit at any time by writing to your Bank or Building Society. Please also send a copy of your letter to The Wigmore Hall Trust, marked for the attention of the Development Director.



LEAVE A LASTING LEGACY

Wigmore Hall offers a formative platform for concert artists to develop their craft and build an audience.

A gift in your Will makes a significant contribution to Wigmore Hall's long-term future, helping to ensure that this great concert hall continues to create fresh experiences and unforgettable memories for generations to come.

If this is something you would like to do – to help future audiences enjoy experiences like those you have so loved here – please contact us.

Thank you.

Call or write to:
Marie-Hélène Osterweil
Director of Development
mhosterweil@wigmore-hall.org.uk
020 7258 8220

Igor Levit



'Wigmore Hall is a reliable locus of sublimity.'

PAUL DRIVER, SUNDAY TIMES
10 MAY 2015

Wigmore Hall
36 Wigmore Street
London W1U 2BP

Tel: +44 (0)20 7258 8200

www.wigmore-hall.org.uk

[@wigmore_hall](https://twitter.com/wigmore_hall)

[f /wigmore.hall](https://www.facebook.com/wigmore.hall)

Director: John Gilhooly OBE, Hon FRAM, Hon FGS, Hon RCM
The Wigmore Hall Trust
Registered Charity No. 1024838



Department
for Culture
Media & Sport



ARTS COUNCIL
ENGLAND

LOTTERY FUNDED

Supported using public funding by
**ARTS COUNCIL
ENGLAND**

Front cover: Alison Balsom

© HUGH CARSWELL